

ULTIME D

Patented

metalfire

Technical Document

Model: ULTIME D MF 600-75 WHE 1S

Dimensions (mm)

- combustion opening WxH: 636x756
- external WxDxH: 860x619x2061
- fresh air: 2xØ150
- diameter flue: Ø250

Technical Data

- capacity: 18.8kW
- efficiency capacity: 79.6%
- CO (volume with 13%O₂): 0.07%
- dust (volume with 13%O₂): 20mg/m³
- weight: 368kg
- Air intake to convection: minimum 360cm² (2xØ150)
- Air exhaust to convection: minimum 360cm² (2xØ150)

Specifications

- inside finishing: heat-resistant black paint
- vermiculite insulation plates
- convection jacket in galvanized steel
- cast iron stoke grate
- back and sides: ribbed cast iron
- interior finishing: ORIGINAL (ribbed cast iron)

Options

- Promat insulation kit
- Finishing frame

Table: prescribed insulation thickness (mm)

| Combustable finishing material | | | | | |
|--|----|----|----|-----|----|
| | A | B | C | D | E |
| Test report (TC = 0,14 W/mK) | 83 | NC | 98 | 110 | 40 |
| Metalfire recommended Promasil 1100L (TC = 0,081 W/mK) | 50 | NC | 60 | 65 | 25 |

| Non-combustable finishing material | | | | | |
|--|---|---|---|---|---|
| non-combustable materials (structural building items EXCLUDED e.g. load bearing walls) | 0 | 0 | 0 | 0 | 0 |
| TC = thermal conductivity NC = non-combustible | | | | | |

First aid and technical support:

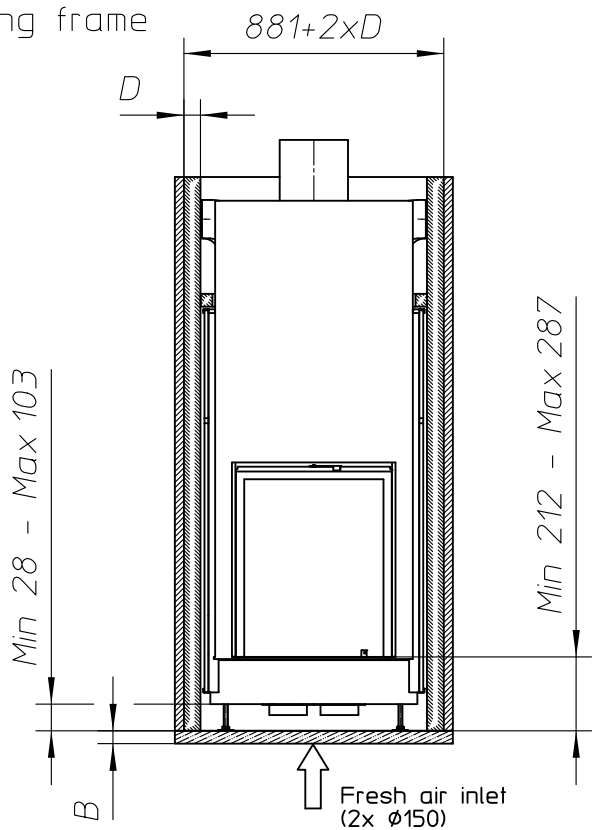
- support@metalfire.eu
- +32 (0)9 261 50 57

| | |
|--|-----------|
| scale 1:25 | Rev. A |
| www.metalfire.eu EN 13229 | CE |
| General dimensional tolerances up to 6mm Metalfire preserves the right to modify specifications without previous notice | |
| | Sheet 1/5 |

Scale 1:35

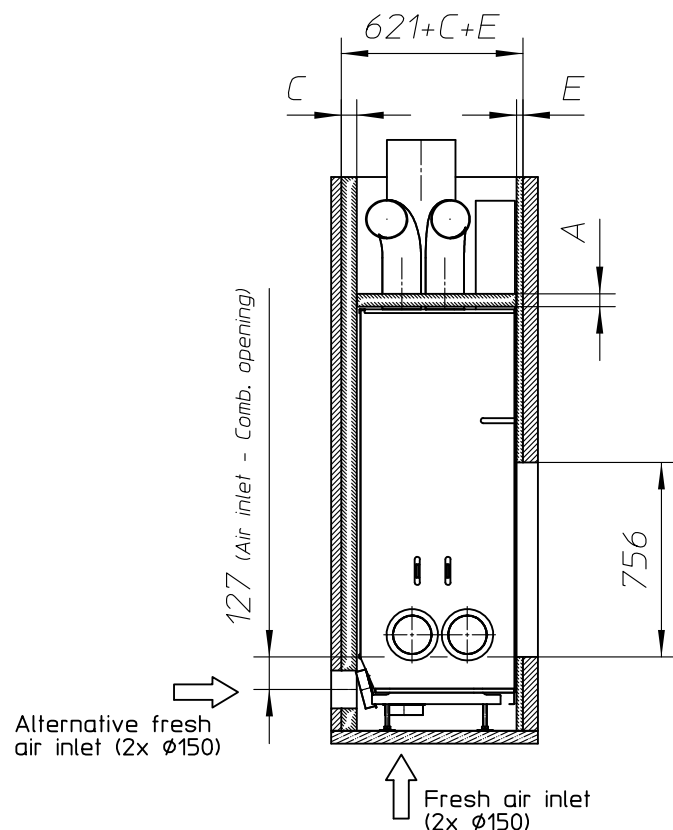
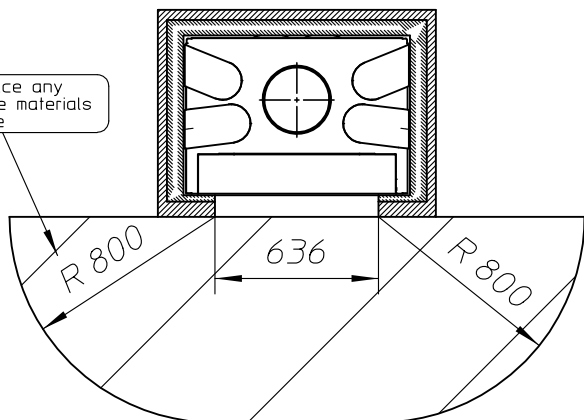
Scale 1:35

Without finishing frame

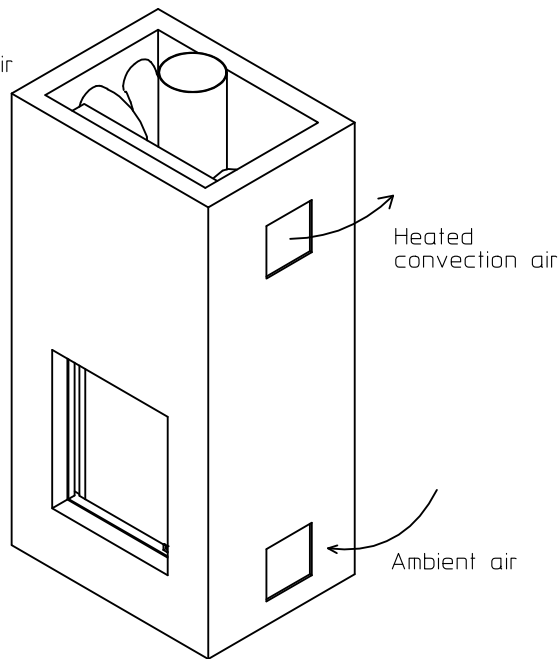


Alternative fresh air inlet
(2x Ø150)

Do NOT place any
combustable materials
in this zone



Heated convection air



ULTIME D Patented

metalfire

Technical Document

Model: ULTIME D MF 600-75 WHE 1S

Dimensions (mm)

- combustion opening WxH: 636x756
- external WxDxH: 860x619x2061
- fresh air: 2xØ150
- diameter flue: Ø250

Technical Data

- capacity: 18.8kW
- efficiency capacity: 79.6%
- CO (volume with 13%O₂): 0.07%
- dust (volume with 13%O₂): 20mg/N³
- weight: 368kg
- Air intake to convection: minimum 360cm² (2xØ150)
- Air exhaust to convection: minimum 360cm² (2xØ150)

Specifications

- inside finishing: heat-resistant black paint
- vermiculite insulation plates
- convection jacket in galvanized steel
- cast iron stoke grate
- back and sides: ribbed cast iron
- interior finishing: ORIGINAL (ribbed cast iron)

Options

- Promat insulation kit
- Finishing frame

Table: prescribed insulation thickness (mm)

| Combustable finishing material | | | | | |
|--|----|----|----|-----|----|
| | A | B | C | D | E |
| Test report (TC = 0,14 W/mK) | 83 | NC | 98 | 110 | 40 |
| Metalfire recommended Promasit 1100L (TC = 0,081 W/mK) | 50 | NC | 60 | 65 | 25 |
| Non-combustable finishing material | | | | | |
| non-combustable materials (structural building items EXCLUDED e.g. load bearing walls) | 0 | 0 | 0 | 0 | 0 |
| TC = thermal conductivity NC = non-combustable | | | | | |

First aid and technical support:

- support@metalfire.eu
- +32 (0)9 261 50 57

scale 1:30

www.metalfire.eu

EN 13229

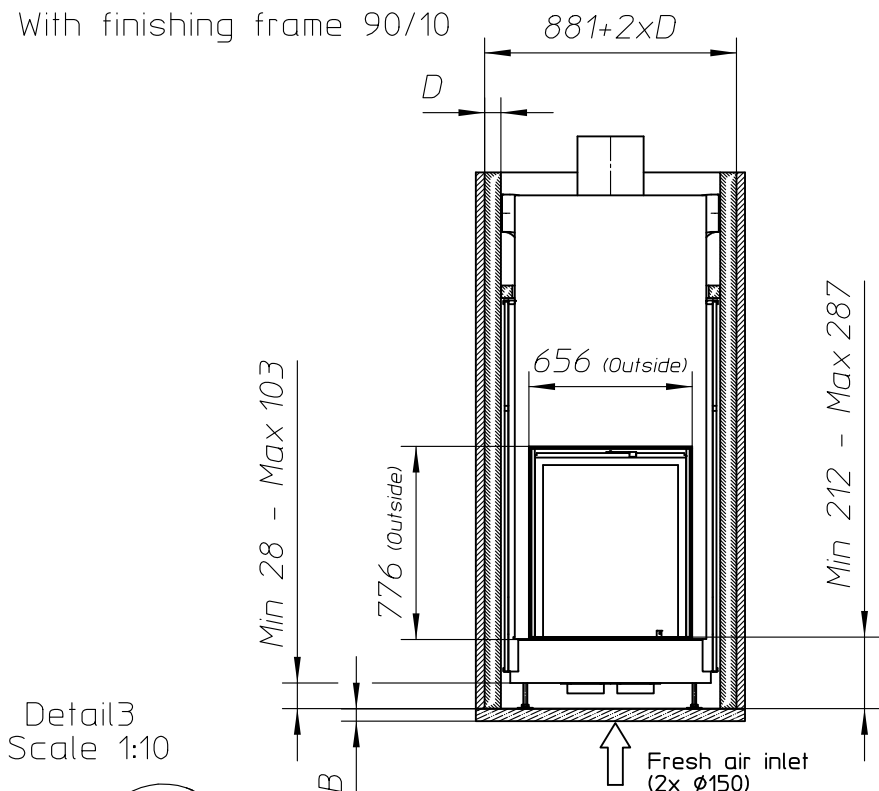
General dimensional tolerances up to 6mm
Metalfire preserves the right to modify specifications without previous notice

Rev.
A

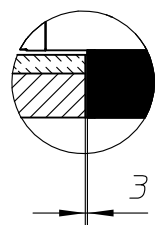
Sheet
2/5

- Combustable finishing material
- Non-combustable finishing material
- Insulation
- Insulation thickness => see table

With finishing frame 90/10



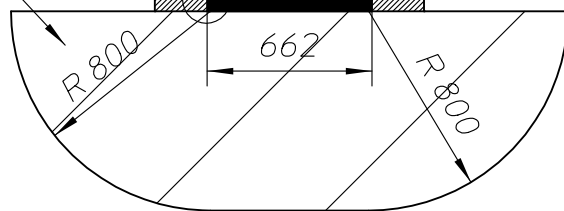
Detail3
Scale 1:10

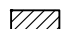
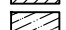
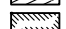


Alternative fresh air inlet
(2x $\phi 150$)

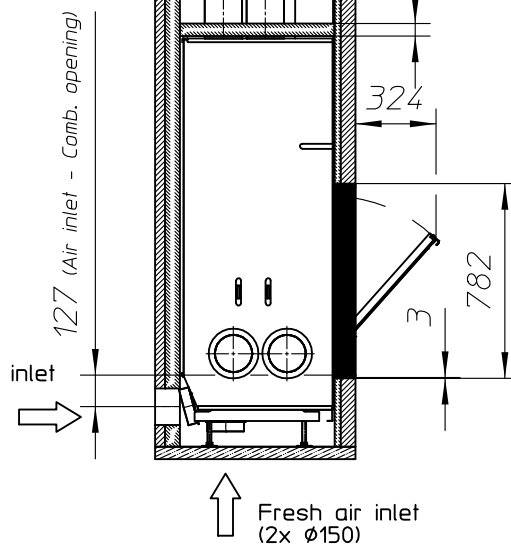
Do NOT place any
combustable materials
in this zone

see Detail3



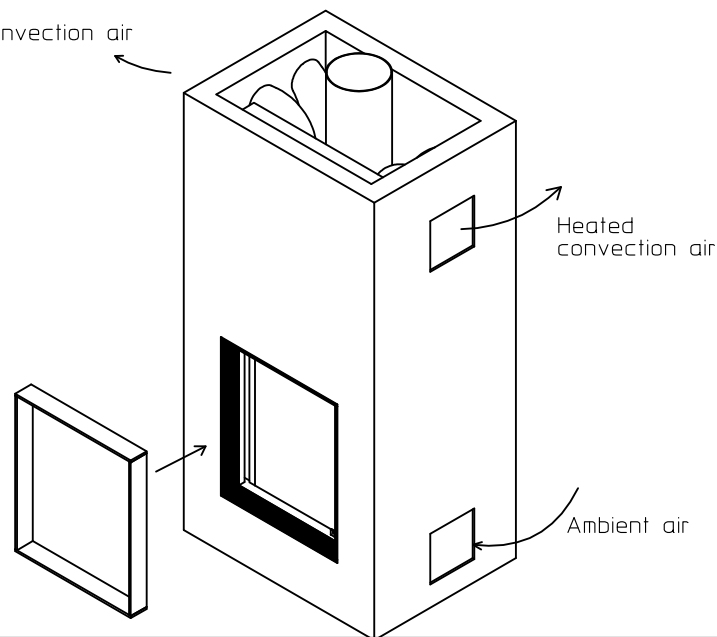
 Combustable finishing material
 Non-combustable finishing material
 Insulation
 Insulation thickness => see table

Alternative fresh air inlet
(2x $\phi 150$)



Fresh air inlet
(2x $\phi 150$)

Heated convection air



ULTIME D Patented

metalfire

Technical Document

Model: ULTIME D MF 600-75 WHE 1S

Dimensions (mm)

- combustion opening WxH: 636x756
- external WxDxH: 860x619x2061
- fresh air: 2x $\phi 150$
- diameter flue: $\phi 250$

Technical Data

- capacity: 18.8kW
- efficiency capacity: 79.6%
- CO (volume with 13%O₂): 0.07%
- dust (volume with 13%O₂): 20mg/m³
- weight: 368kg

- Air intake to convection: minimum 360cm² (2x $\phi 150$)
- Air exhaust to convection: minimum 360cm² (2x $\phi 150$)

Specifications

- inside finishing: heat-resistant black paint
- vermiculite insulation plates
- convection jacket in galvanized steel
- cast iron stoke grate
- back and sides: ribbed cast iron
- interior finishing: ORIGINAL (ribbed cast iron)

Options

- Promat insulation kit
- Finishing frame

Table: prescribed insulation thickness (mm)

| Combustable finishing material | | | | | |
|--|----|----|----|-----|----|
| | A | B | C | D | E |
| Test report (TC = 0,14 W/mK) | 83 | NC | 98 | 110 | 40 |
| Metalfire recommended Promasil 1100L (TC = 0,081 W/mK) | 50 | NC | 60 | 65 | 25 |
| Non-combustable finishing material | | | | | |
| non-combustable materials (structural building items EXCLUDED e.g. load bearing walls) | 0 | 0 | 0 | 0 | 0 |

TC = thermal conductivity NC = non-combustable

First aid and technical support:

- support@metalfire.eu
- +32 (0)9 261 50 57

scale 1:30

www.metalfire.eu

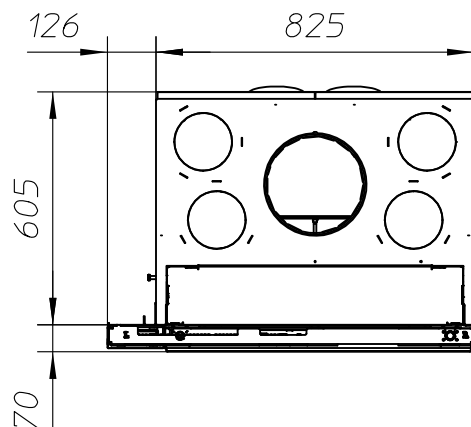
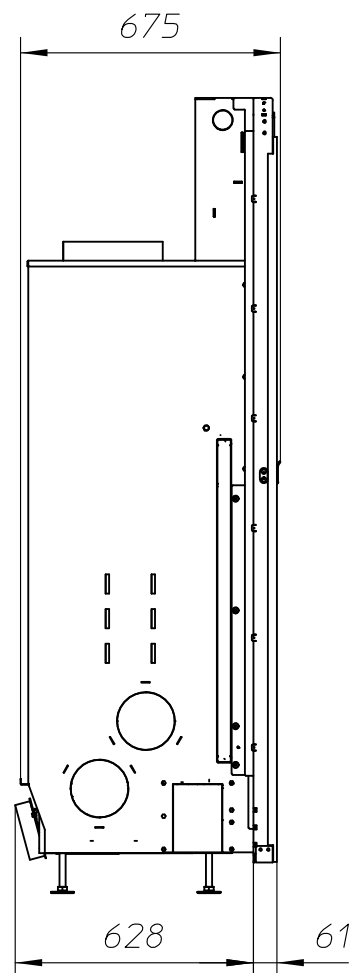
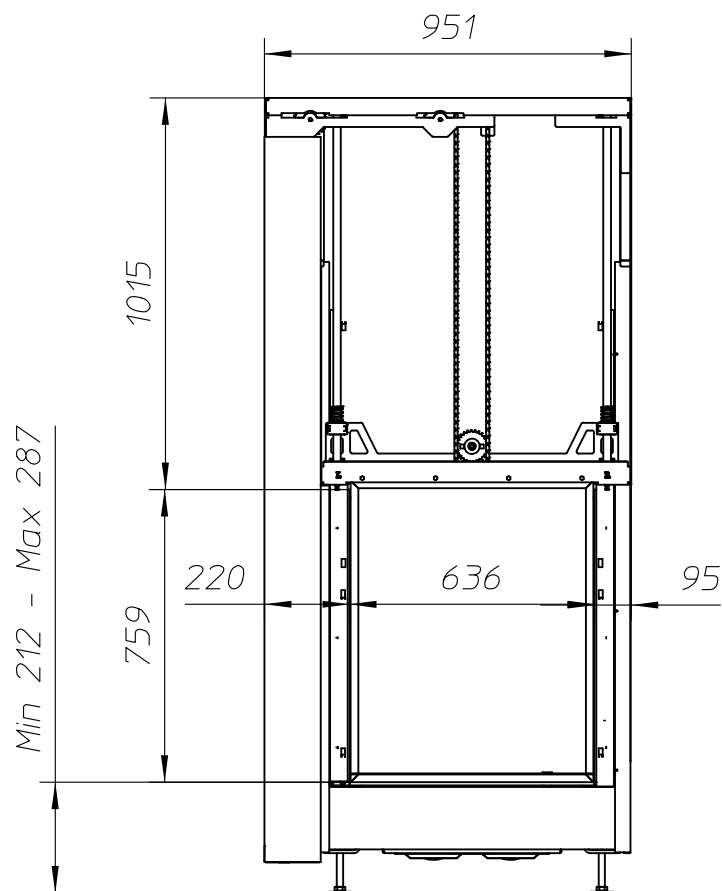
EN 13229

General dimensional tolerances up to 6mm
Metalfire preserves the right to modify specifications without previous notice

Rev.
A

Sheet
3/5

WITH FIRESCREEN - NO FINISHING FRAME



ULTIME D Patented

metalfire

Technical Document

Model: ULTIME D MF 600-75 WHE 1S

Dimensions (mm)

- combustion opening WxH: 636x756
- external WxDxH: 951x675x2061
- fresh air: 2x \varnothing 150
- diameter flue: \varnothing 250

Technical Data

- capacity: 18.8kW
- efficiency capacity: 79.6%
- CO (volume with 13%O₂): 0.07%
- dust (volume with 13%O₂): 20mg/N³
- weight: 368kg
- Air intake to convection: minimum 360cm² (2x \varnothing 150)
- Air exhaust to convection: minimum 360cm² (2x \varnothing 150)

Specifications

- inside finishing: heat-resistant black paint
- vermiculite insulation plates
- convection jacket in galvanized steel
- cast iron stoke grate
- back and sides: ribbed cast iron
- interior finishing: ORIGINAL (ribbed cast iron)

First aid and technical support:

- support@metalfire.eu
- +32 (0)9 261 50 57

scale 1:20

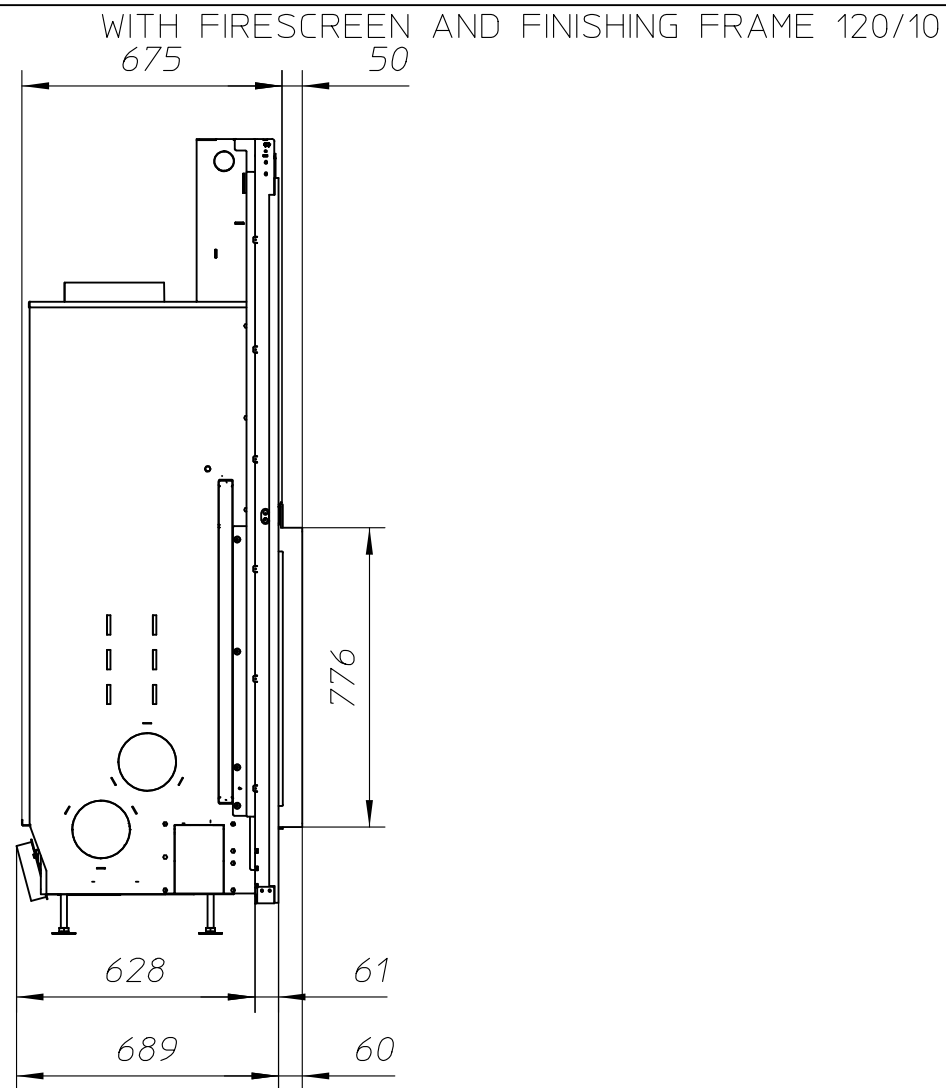
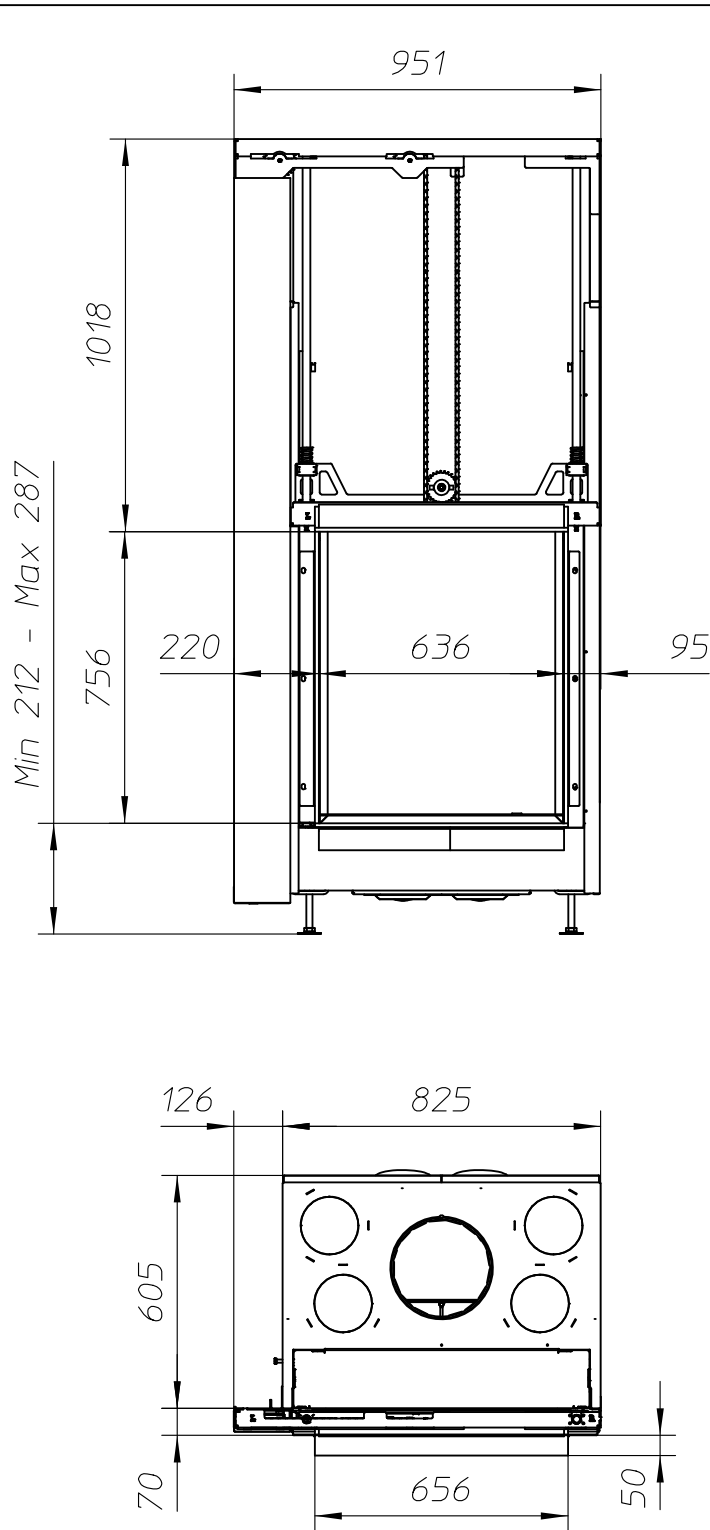
Rev.
A

www.metalfire.eu EN 13229

CE

General dimensional tolerances up to 6mm
Metalfire preserves the right to modify specifications without previous notice

Sheet
4/5



ULTIME D Patented

metalfire

Technical Document

Model: ULTIME D MF 1050-50 WHE 1S

Dimensions (mm)

- combustion opening WxH: 636x756
- external WxDxH: 951x749x2061
- fresh air: 2xØ150
- diameter flue: Ø250

Technical Data

- capacity: 18.8kW
- efficiency capacity: 79.6%
- CO (volume with 13%O₂): 0.07%
- dust (volume with 13%O₂): 20mg/N³
- weight: 368kg
- Air intake to convection: minimum 720cm²(4xØ150)
- Air exhaust to convection: minimum 720cm²(4xØ150)

Specifications

- inside finishing: heat-resistant black paint
- vermiculite insulation plates
- convection jacket in galvanized steel
- cast iron stoke grate
- back and sides: ribbed cast iron
- interior finishing: ORIGINAL (ribbed cast iron)

First aid and technical support:

- support@metalfire.eu
- +32 (0)9 261 50 57

scale 1:20

www.metalfire.eu EN 13229

General dimensional tolerances up to 6mm
Metalfire preserves the right to modify specifications without previous notice

Rev.
A

CE

Sheet
5/5